



6500kg V2G 6 Pallet Footprint Unit Specification/Technical Data

General Specification

This model of double deck lift is designed with the following considerations and requirements.

- To eliminate civil engineering works as associated with traditional scissor lifts.
 - To service double deck trailers with finished floor levels of 150mm up to 3125mm into loading bays of Flat-floor stores, Flat-floor DCs (small).
 - Provision can also be made to run through from ground / yard-level on to lift.
 - To be modular in its build enabling rapid installation to reduce onsite disruption.
- The unit comprises of a base section and a lid to form the Loadhouse and lift.
- Loadhouse Roof Designs may vary to suit Store/Location.
 - To be easy to relocate from site to site and / or Bay to Bay

Operating range: 300mm to 3125mm - suitable for double deck trailers, rigid and articulated vehicles including European specification trailers. (Provision can be made to run through from yard onto lift with the inclusion of a bridge plate ramp).

Lifting Speed: Twin speed. Fast speed 90mm/s raising and lowering, slow speed 35mm/s.

Unlike scissor lifts, lift speed is linear throughout the whole cycle of the lift stroke giving consistent and quicker travel times.

Operation: Lift platform for lifting and lowering of goods and operators.

Capacity: 6500kg UDL

Load type configuration: Designed around 12, wheeled roll cages of 830 x 750mm x 500kg on plan. In conjunction with MHE the units can also accommodate 5 / 6 pallets of 1200 x 1000mm on plan.

Location: External, surface mounted onto goods yards, marrying up to the loading bay. No specialised pilings / foundations are required.

Overall Loadhouse dimensions: 3984mm (w) x 5765 (l) x 5600mm (h). Width subject to cladding variations. Height subject to roof specification.

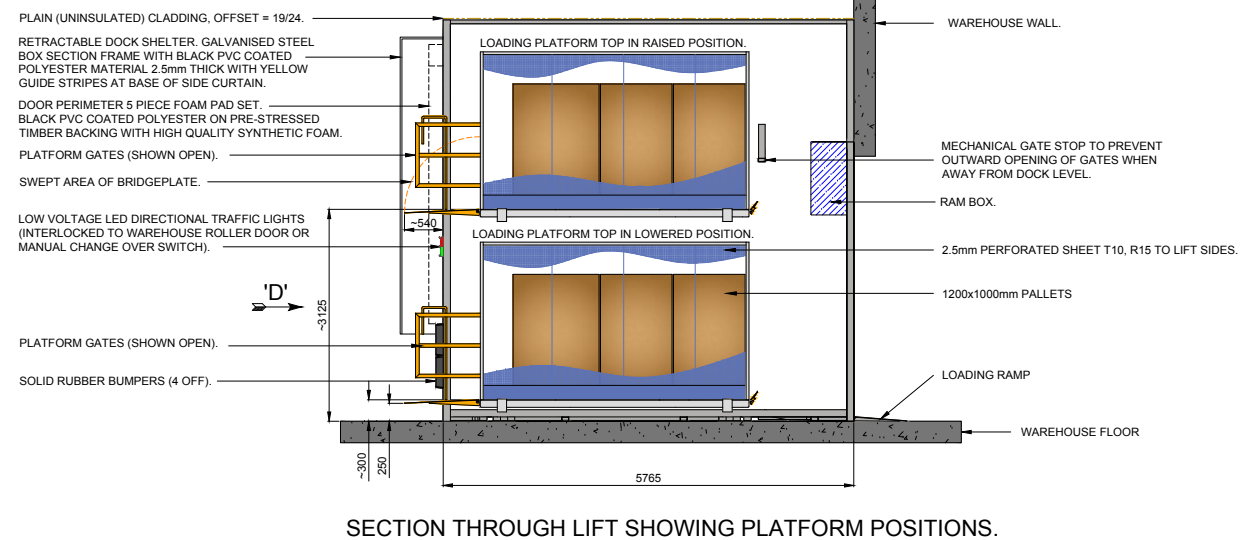
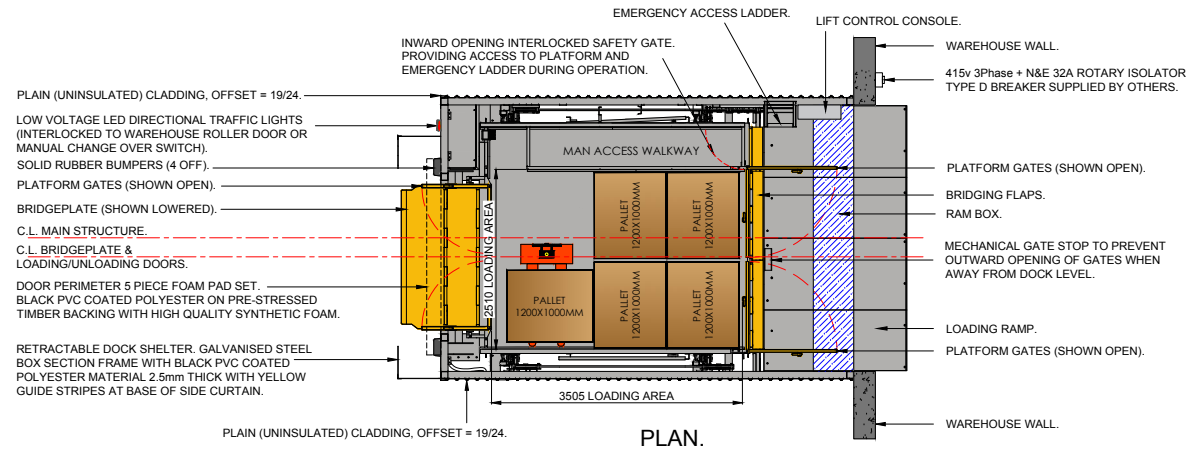
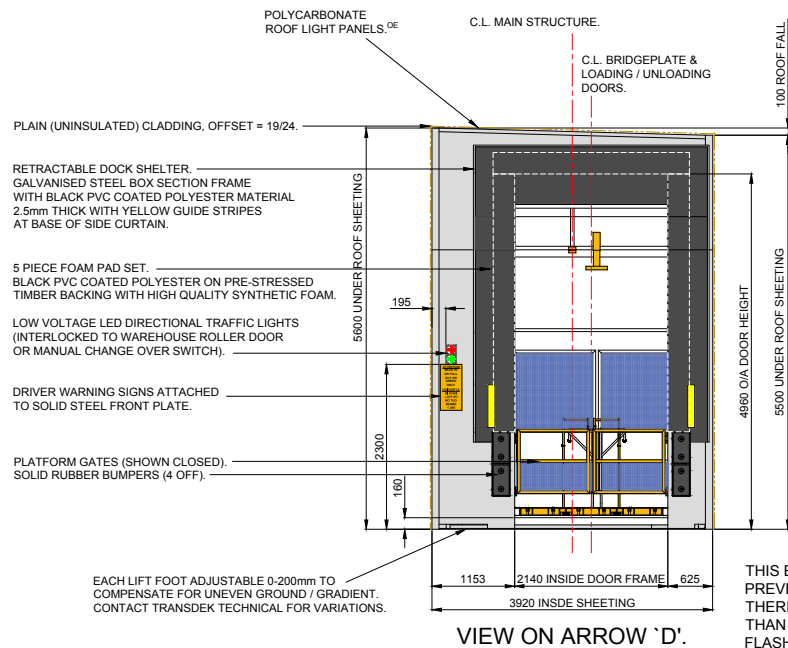
Platform dimensions Loading Area: 2510mm (w) x 3505mm (l).

Personnel access: 550mm (w) gantry to either the left hand or the right hand side of the lift. Standard fit - Right hand side. When viewed from dock onto yard).

Lift colours: External single skin cladding in grey - Goosewing Grey BS 10A05. Exterior framework / Interior framework and Platform - Goose Grey BS 00A05. (Other colours available on request).



TRANSDEK UK Ltd.
BRYANS CLOSE,
HARWORTH, DONCASTER,
SOUTH YORKSHIRE, DN11 8RY.
TEL: 01302 752276
WEB: www.transdek.com
EMAIL: info@transdek.com



07					
06					
05					
04					
03					
02					
REV No.	REV CODE	REVISION NOTE	DATE	CHANGE BY	



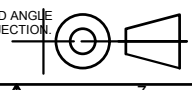
TRANSDEK UK Ltd
BRYANS CLOSE, HARWORTH,
DONCASTER, DN11 8RY
TEL: 01302 752276
WEB: www.transdek.com
EMAIL: info@transdek.com

THIS DRAWING IS THE PROPERTY OF TRANSDEK UK LTD AND IS CONFIDENTIAL. IT IS ISSUED SUBJECT TO THE CONDITIONS THAT:

- THE INFORMATION OR ANY PART THEREOF CONTAINED IN IT SHALL NOT BE DISCLOSED IN ANY FORM TO A THIRD PARTY.
- IT OR ANY PART OF IT SHALL NOT BE REPRODUCED IN ANY FORM.

GENERAL NOTES

- WELDING SYMBOLS STANDARD TO ISO 2553 METHOD B.
- REMOVE ALL BURRS AND SHARP EDGES.
- ALL DIMENSIONS IN MILLIMETRES UNLESS OTHERWISE STATED.
- THIRD ANGLE PROJECTION.



MATERIAL:	N/A	
FINISH:	N/A	
WELDING SPEC:	BS EN 1011-1:1998 & BS EN 1011-2:2001	DATE: 01/03/2017
TOLERANCES UNLESS OTHERWISE STATED		
MACHINING:	± 0.5	ANGULAR: ± 0.5°
FABRICATION & STRUCTURAL		
UP TO 300:	± 1	1001 UP TO 2000: ± 3
301 TO 1000:	± 2	OVER 2000: ± 5
SCALE:	NTS	
ESTIMATED WEIGHT:	N/A	
SHEET:	1 OF 1	

PROJECT:	6500kg Double Deck V2G Loadhouses	A1	BORDER VERSION:	2
TITLE:	6500kg Double Deck V2G Loadhouses Specification/Technical Data			
DRG. No.	1900-020	REVISION:	02	