



6000kg V2G 8 Pallet Footprint Unit Specification/Technical Data

General Specification

This model of double deck lift is designed with the following considerations and requirements.

- To eliminate civil engineering works as associated with traditional scissor lifts.
 - To service double deck trailers with finished floor levels of 150mm up to 3125mm into loading bays of Flat-floor stores, Flat-floor DCs (small).
 - Provision can also be made to run through from ground / yard-level on to lift.
 - To be modular in its build enabling rapid installation to reduce onsite disruption.
- The unit comprises of a base section and a lid to form the Loadhouse and lift.
- Loadhouse Roof Designs may vary to suit Store/Location.
 - To be easy to relocate from site to site and / or Bay to Bay

Operating range: 300mm to 3125mm - suitable for double deck trailers, rigid and articulated vehicles including European specification trailers. (Provision can be made to run through from yard onto lift with the inclusion of a bridge plate ramp).

Lifting Speed: Twin speed. Fast speed 90mm/s raising and lowering, slow speed 35mm/s.

Unlike scissor lifts, lift speed is linear throughout the whole cycle of the lift stroke giving consistent and quicker travel times.

Operation: Lift platform for lifting and lowering of goods and operators.

Capacity: 6000kg UDL

Load type configuration: Designed around 15, wheeled roll cages of 830 x 750mm x 500kg on plan. In conjunction with MHE the units can also accommodate 7 / 8 pallets of 1200 x 1000mm on plan.

Location: External, surface mounted onto goods yards, marrying up to the loading bay. No specialised pilings / foundations are required.

Overall Loadhouse dimensions: 3984mm (w) x 6732 (l) x 5600mm (h). Width subject to cladding variations. Height subject to roof specification.

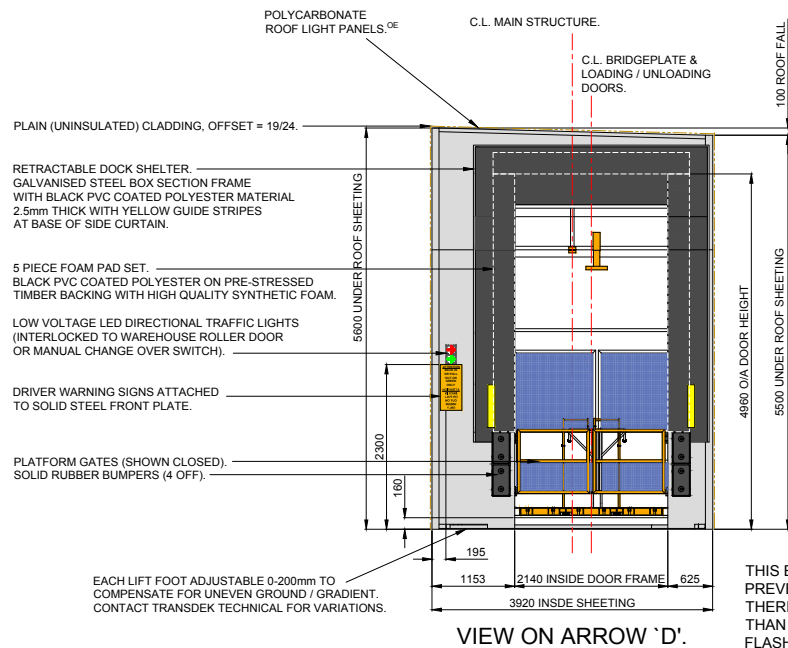
Platform dimensions Loading Area: 2510mm (w) x 4472mm (l).

Personnel access: 550mm (w) gantry to either the left hand or the right hand side of the lift. Standard fit - Right hand side. When viewed from dock onto yard).

Lift colours: External single skin cladding in grey - Goosewing Grey BS 10A05. Exterior framework / Interior framework and Platform - Goose Grey BS 00A05. (Other colours available on request).

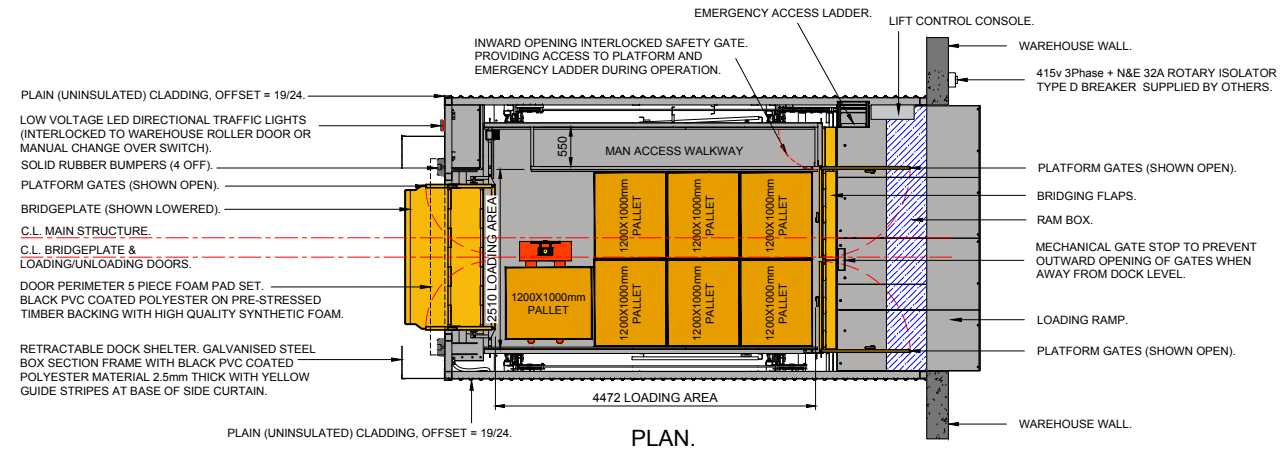


TRANSDEK UK Ltd.
BRYANS CLOSE,
HARWORTH, DONCASTER,
SOUTH YORKSHIRE, DN11 8RY.
TEL: 01302 752276
WEB: www.transdek.com
EMAIL: info@transdek.com

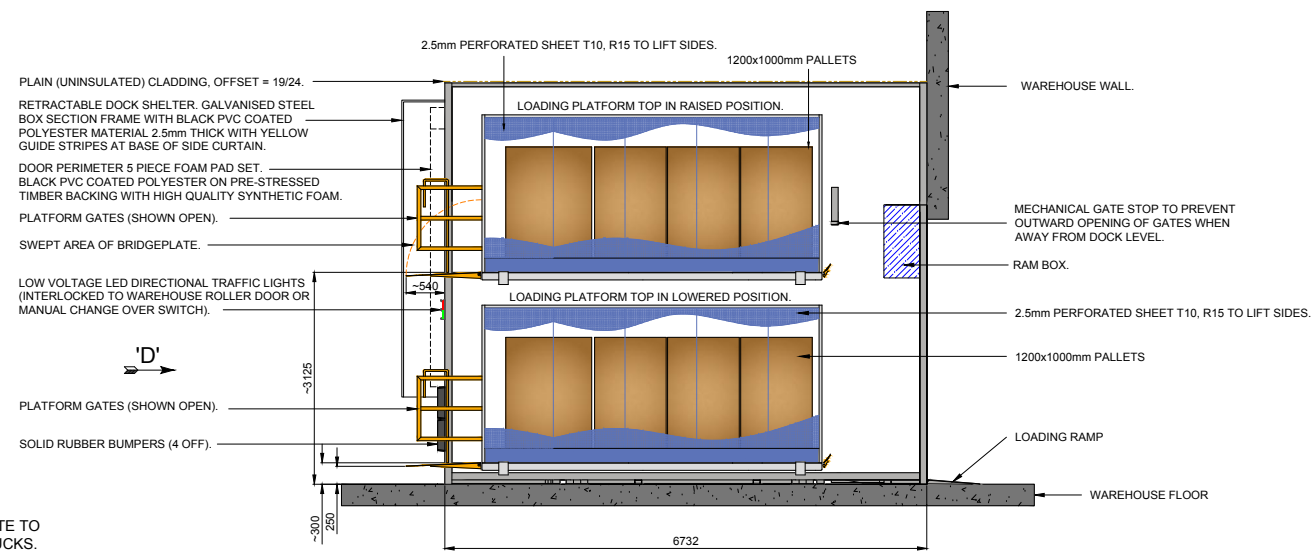


VIEW ON ARROW 'D'.

THIS END IS CLAD WITH SOLID STEEL PLATE TO PREVENT DAMAGE FROM REVERSING TRUCKS. THEREFORE NO SHEETING IS REQUIRED OTHER THAN 200mm CORNER AND FLOOR PERIMETER FLASHINGS.



PLAN.



SECTION THROUGH LIFT SHOWING PLATFORM POSITIONS.

07					
06					
05					
04					
03					
02					
REV No.	REV CODE	REVISION NOTE	DATE	CHANGE BY	



TRANSDEK UK Ltd
BRYANS CLOSE, HARWORTH,
DONCASTER, DN11 8RY
TEL: 01302 752276
WEB: www.transdek.com
EMAIL: info@transdek.com

THIS DRAWING IS THE PROPERTY OF TRANSDEK UK LTD AND IS CONFIDENTIAL. IT IS ISSUED SUBJECT TO THE CONDITIONS THAT:
1. THE INFORMATION OR ANY PART THEREOF CONTAINED IN IT SHALL NOT BE DISCLOSED IN ANY FORM TO A THIRD PARTY.
2. IT OR ANY PART OF IT SHALL NOT BE REPRODUCED IN ANY FORM.

GENERAL NOTES

- WELDING SYMBOLS STANDARD TO ISO 2553 METHOD B.
- REMOVE ALL BURRS AND SHARP EDGES.
- ALL DIMENSIONS IN MILLIMETRES UNLESS OTHERWISE STATED.
- THIRD ANGLE PROJECTION.



MATERIAL:	N/A	
FINISH:	N/A	
WELDING SPEC:	BS EN 1011-1:1998 & BS EN 1011-2:2001	DATE: 23/03/2017
TOLERANCES UNLESS OTHERWISE STATED		
MACHINING:	± 0.5	ANGULAR: ± 0.5°
FABRICATION & STRUCTURAL		
UP TO 300:	± 1	1001 UP TO 2000: ± 3
301 TO 1000:	± 2	OVER 2000: ± 5
DRAWN BY:	JEL	SCALE: NTS
ESTIMATED WEIGHT:	N/A	
SHEET:	1 OF 1	

PROJECT:	6000kg Double Deck V2G Loadhouses	A1	BORDER VERSION:	2
TITLE:	6000kg Double Deck V2G Loadhouses Specification/Technical Data			
DRG. No.	9100-012654-00	REVISION:	01	