



TRANSEK UK LTD.
BRYANS CLOSE
HARWORTH, DONCASTER
SOUTH YORKSHIRE, DN11 8RY.
TEL: 01302 752276
WEB: www.transdek.com
EMAIL: info@transdek.com

RETRACTABLE DOCK SHELTER. GALVANISED STEEL BOX SECTION FRAME WITH BLACK PVCCOATED POLYESTER MATERIAL 2.5mm THICK WITH YELLOW GUIDE STRIPES AT BASE OF SIDE CURTAIN.

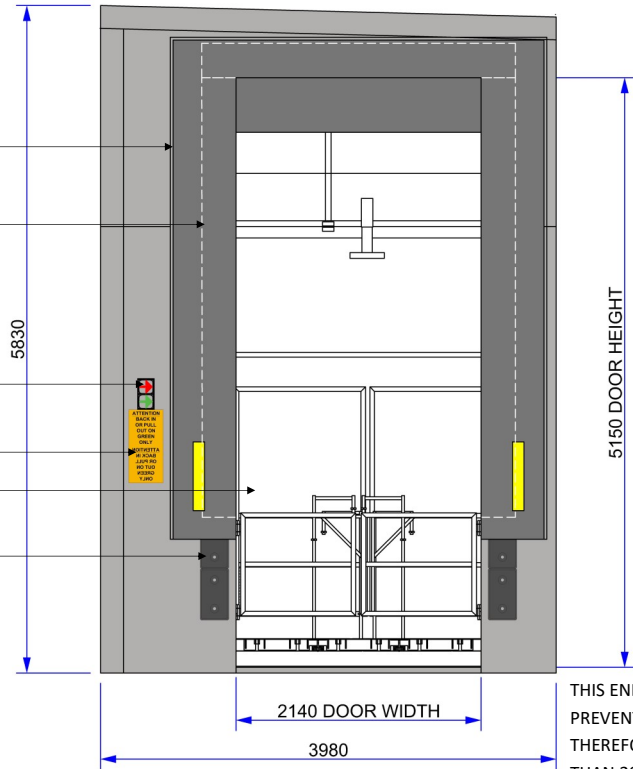
5 PIECE FOAM PAD SET.
BLACK PVC COATED POLYESTER ON PRE-STRESSED TIMBER BACKING WITH HIGH QUALITY SYNTHETIC FOAM.

LOW VOLTAGE LED DIRECTIONAL TRAFFIC LIGHTS (INTERLOCKED TO WAREHOUSE ROLLER DOOR OR MANUAL CHANGE OVER SWITCH).

DRIVER WARNING SIGNS

PLATFORM GATES (SHOWN AS CLOSED)

DOCK BUMPERS



FRONT ELEVATION

THIS END IS CLAD WITH SOLID STEEL PLATE TO PREVENT DAMAGE FROM REVERSING TRUCKS. THEREFORE NO SHEETING IS REQUIRED OTHER THAN 200mm CORNER AND FLOOR PERIMETER FLASHINGS



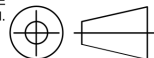
THIS DRAWING IS THE PROPERTY OF TRANSEK UK LTD AND IS CONFIDENTIAL. IT IS ISSUED SUBJECT TO THE CONDITIONS THAT;

1. THE INFORMATION OR ANY PART THEREOF CONTAINED IN IT SHALL NOT BE DISCLOSED IN ANY FORM TO A THIRD PARTY.
2. IT OR ANY PART OF IT SHALL NOT BE REPRODUCED IN ANY FORM.



GENERAL NOTES

1. WELDING SYMBOLS STANDARD TO ISO 2553 METHOD B.
2. REMOVE ALL BURRS AND SHARP EDGES.
3. ALL DIMENSIONS IN MILLIMETRES UNLESS OTHERWISE STATED.
4. THIRD ANGLE PROJECTION.



MATERIAL:
N/A

FINISH: N/A

WELDING SPEC: BS EN 1011-1:1998 & BS EN 1011-2:2001

TOLERANCES UNLESS OTHERWISE STATED

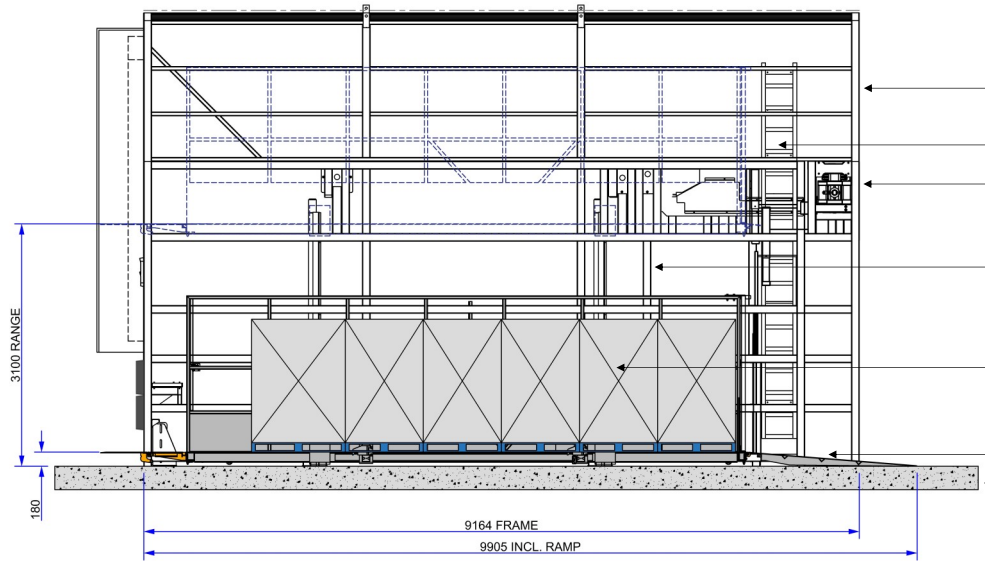
MACHINING: ± 0.5 ANGULAR: ± 0.5°

FABRICATION & STRUCTURAL

UP TO 300: ± 1 1001 UP TO 2000: ± 3

301 TO 1000: ± 2 OVER 2000: ± 5

SECTION THROUGH LIFT SHOWING PLATFORM SERVICE RANGE



PLAN

WAREHOUSE END

LID MODULE OPTIONAL DEPENDANT UPON SITE.

EMERGENCY ACCESS LADDER

RAM BOX

PLATFORM SIDES FULLY CLAD TO PROTECT GOODS

1200mm x 1000mm PALLETS

FIXED ACCESS RAMP
WAREHOUSE/YARD SLAB

Capacity: 5300kg UDL

Configuration: 11 pallets of 1200mm x 1000mm, weighing 440kg (max).

In conjunction with MHE the units can also accommodate 24 wheeled roll cages of 860mm x 750mm, weighing 220kg (max) each plus operators—no passengers.

Location: External, Surface mounted onto goods yards or marrying up to the loading bay.
Internal, direct mounting onto warehouse slab.
No specialised pilings/foundations required.

Overall external dimensions: 3920mm (W) x 9200mm (L) x 5650mm (H).
Width subject to cladding variations. Height subject to roof specification.

Platform dimensions loading area: 2500mm (W) x 6900mm (L).
Plus a separate operator walkway from the rear to the front of the moving platform.

Personnel walkway: Provides constant segregated access for operators between vehicle and dock without the loss of any product space.

Lift colours: External single skin cladding in grey—Goosewing Grey BS 10A05.
Exterior framework/interior framework and platform—Goose Grey BS 00A05.
(other colours available on request).