



TRANSEK UK LTD.
BRYANS CLOSE
HARWORTH, DONCASTER
SOUTH YORKSHIRE, DN11 8RY.
TEL: 01302 752276
WEB: www.transdek.com
EMAIL: info@transdek.com

RETRACTABLE DOCK SHELTER. GALVANISED
STEEL BOX SECTION FRAME WITH BLACK
PVCCOATED POLYESTER MATERIAL 2.5mm
THICK WITH YELLOW GUIDE STRIPES AT
BASE OF SIDE CURTAIN.

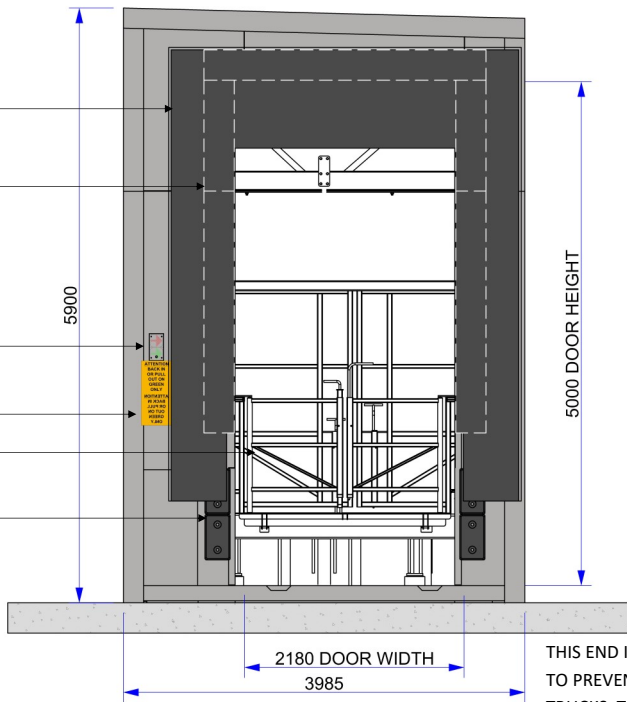
5 PIECE FOAM PAD SET.
BLACK PVC COATED POLYSTER ON
PRE-STRESSED TIMBER BACKING WITH HIGH
QUALITY SYNTHETIC FOAM.

LOW VOLTAGE LED DIRECTIONAL TRAFFIC
LIGHTS (INTERLOCKED TO WAREHOUSE ROLLER
DOOR OR MANUAL CHANGE OVER SWITCH).

DRIVER WARNING SIGNS

PLATFORM GATES (SHOWN AS CLOSED)

DOCK BUMPERS



FRONT ELEVATION

THIS END IS CLAD WITH SOLID STEEL PLATE
TO PREVENT DAMAGE FROM REVERSING
TRUCKS. THEREFORE NO SHEETING IS RE-
QUIRED OTHER THAN 200mm CORNER AND
FLOOR PERIMETER FLASHINGS

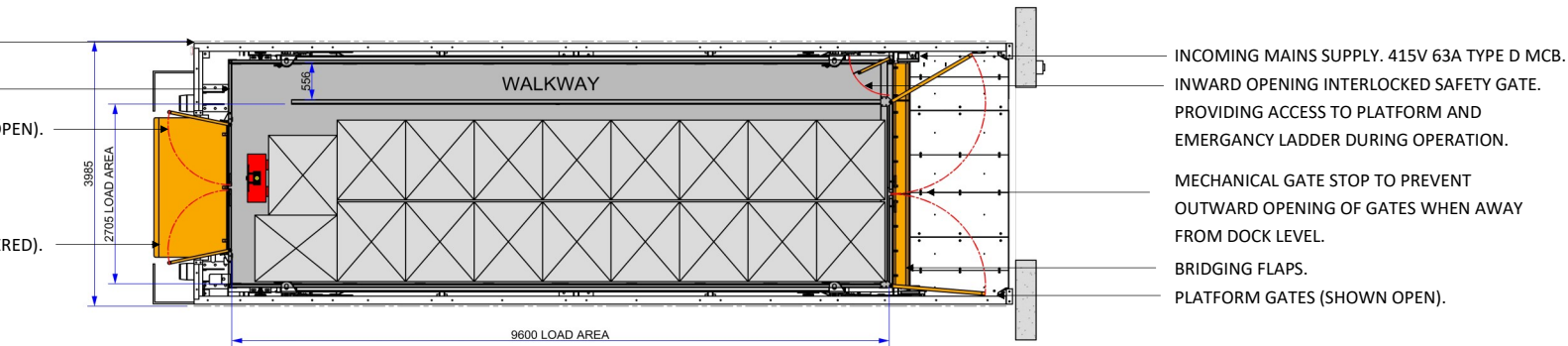
CLADDING, OFFSET = 30mm.

LIFT CONTROL STATION

PLATFORM GATES (SHOWN AS OPEN).

BRIDGEPLATE (SHOWN AS LOWERED).

VEHICLE END



PLAN

WAREHOUSE END

LID MODULE OPTIONAL DEPENDANT UPON SITE.

EMERGENCY ACCESS LADDER

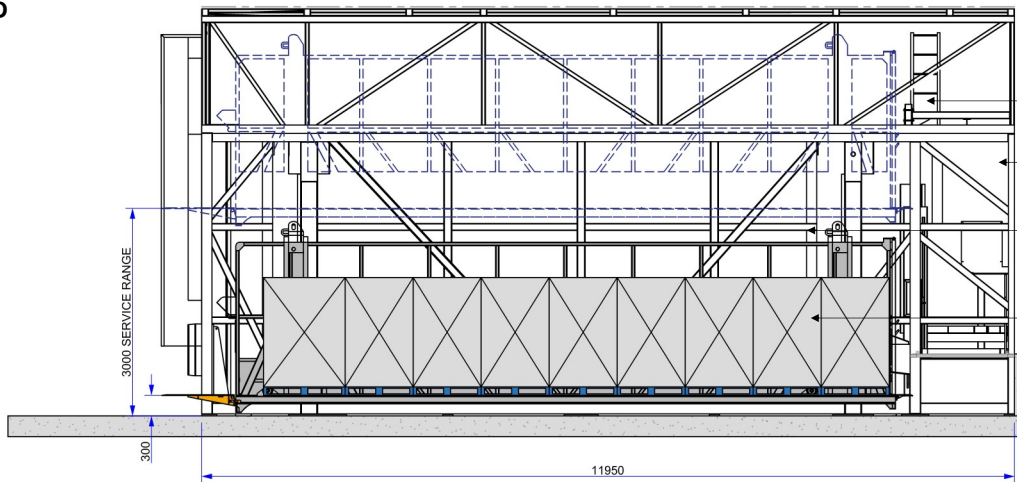
RAM BOX

PLATFORM SIDES FULLY CLAD TO
PROTECT GOODS

1200mm x 1000mm PALLETS

RANGE 800mm TO 1500mm.

WAREHOUSE/YARD SLAB



SECTION THROUGH LIFT SHOWING PLATFORM SERVICE RANGE

Double Deck Series: 18 Pallet Footprint Unit Specification/Technical Data

General Specification

This model of double deck lift is designed with the following considerations and requirements

- To eliminate civil engineering works as associated with traditional scissor lifts.
- To service double deck trailers with finished floor levels of 150mm up to 3125mm into loading bays, DCs, retail outlets and distribution centres.
- Provision can also be made to run through from warehouse onto yard.
- To be modular in its build enabling rapid installation to reduce onsite disruption. (The unit comprises of a base section and a lid to form the Loadhouse and lift).
- Loadhouse roof designs may vary to suit location such as store or DC canopies.
- Relocatable from site to site and/or bay to bay in a couple of days.

Operating Range: 150mm to 3125mm suitable for double deck trailers, rigid and articulated vehicles including European specification trailers (Provision can be made to run through from yard onto lift with the inclusion of a bridge plate ramp).

Lifting Speed: 90mm/s raising and lowering.
Unlike scissor lifts, lift speed is linear throughout the whole cycle of the lift stroke giving consistent and quicker travel times.

Operation: Lift platform for lifting and lowering of goods and operators.

Capacity: 20000kg UDL

Configuration: 18 pallets of 1200mm x 1000mm, weighing 1100kg (max).
In conjunction with MHE the units can also accommodate 30 wheeled roll cages of 860mm x 750mm, weighing 650kg (max) each plus operators—no passengers.

Location: External, Surface mounted onto goods yards, marrying up to the loading bay.
Internal, direct mounting onto warehouse slab.
No specialised pilings/foundations required.


Overall external dimensions: 3925mm (W) x 12000mm (L) x 5650mm (H).
Width subject to cladding variations. Height subject to roof specification.

Platform dimensions loading area: 2705mm (W) x 9600mm (L).
Plus a separate operator walkway from the rear to the front of the moving platform.

Personnel walkway: Provides constant segregated access for operators between vehicle and dock without the loss of any product space.

Lift colours: External single skin cladding in grey—Goosewing Grey BS 10A05.
Exterior framework/interior framework and platform—Goose Grey BS 00A05.
(other colours available on request).

07					
06					
05					
04					
03					
02					
REV No.	REV CODE	REVISION NOTE	DATE	CHANGE BY	



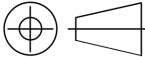
TRANSEK UK LTD.
BRYANS CLOSE, HARWORTH,
DONCASTER, DN11 8RY
TEL: 01302 752276
FAX: 01302 752434
EMAIL: info@transdek.com

THIS DRAWING IS THE PROPERTY OF TRANSEK UK LTD
AND IS CONFIDENTIAL. IT IS ISSUED SUBJECT TO THE
CONDITIONS THAT:

- THE INFORMATION OR ANY PART THEREOF CONTAINED
IN IT SHALL NOT BE DISCLOSED IN ANY FORM TO A
THIRD PARTY.
- IT OR ANY PART OF IT SHALL NOT BE REPRODUCED
IN ANY FORM.

GENERAL NOTES

- WELDING SYMBOLS STANDARD
TO ISO 2553 METHOD B.
- REMOVE ALL BURRS AND SHARP
EDGES.
- ALL DIMENSIONS IN MILLIMETRES
UNLESS OTHERWISE STATED.
- THIRD ANGLE
PROJECTION.



MATERIAL: N/A	PROJECT: 18 Pallet Double Deck Loadhouses	A3	BORDER VERSION: 5
FINISH: N/A	18 Pallet Double Deck Loadhouses Specification/Technical Data		
WELDING SPEC: BS EN 1011-1:1998 & BS EN 1011-2:2001	DRG. No. 18_Pallet_DD_20T_1		
TOLERANCES UNLESS OTHERWISE STATED MACHINING: ± 0.5 ANGULAR: ± 0.5° FABRICATION & STRUCTURAL UP TO 300: ± 1 1001 UP TO 2000: ± 3 301 TO 1000: ± 2 OVER 2000: ± 5	REVISION: 01		
DRAWN BY: AK	SHEET: 1 of 1		
DATE: 03/06/2020	SCALE: N/A		
ESTIMATED WEIGHT: N/A			