



4000kg, 6 Pallet Fixed Vehicle Dock Lift Specification/Technical Data

General Specification

This model of lift is designed with the following considerations and requirements.

- To move product between two fixed landings.
- To eliminate the civil engineering works as associated with traditional scissor lifts.
- To service varying floor levels up to 1600mm.
- Built in conformance with Machinery Directive 2006/42/EC, BS EN 1570-1:2011 + A1:2014; UKCA Marked
- Instant install - self contained unit.

Operating Range: Ground to 1600mm.

Lifting Speed: 90mm/s. Number of motor starts per hour 40. "Normal" running conditions are 7/8 cycles per hour, 20 hours a day.

Operation: Lift platform for lifting and lowering of goods and operators. 3 Phase, 415V, 32A Power Pack with controls at each landing.
Safety Edge to front of platform. Light Beams to upper and lower landings.

Capacity: 4000kg UDL.

Load Type Configuration: Designed around pallet sizes of 1200 x 1000mm. The platform can accommodate up to 2 pallets of this size configuration.

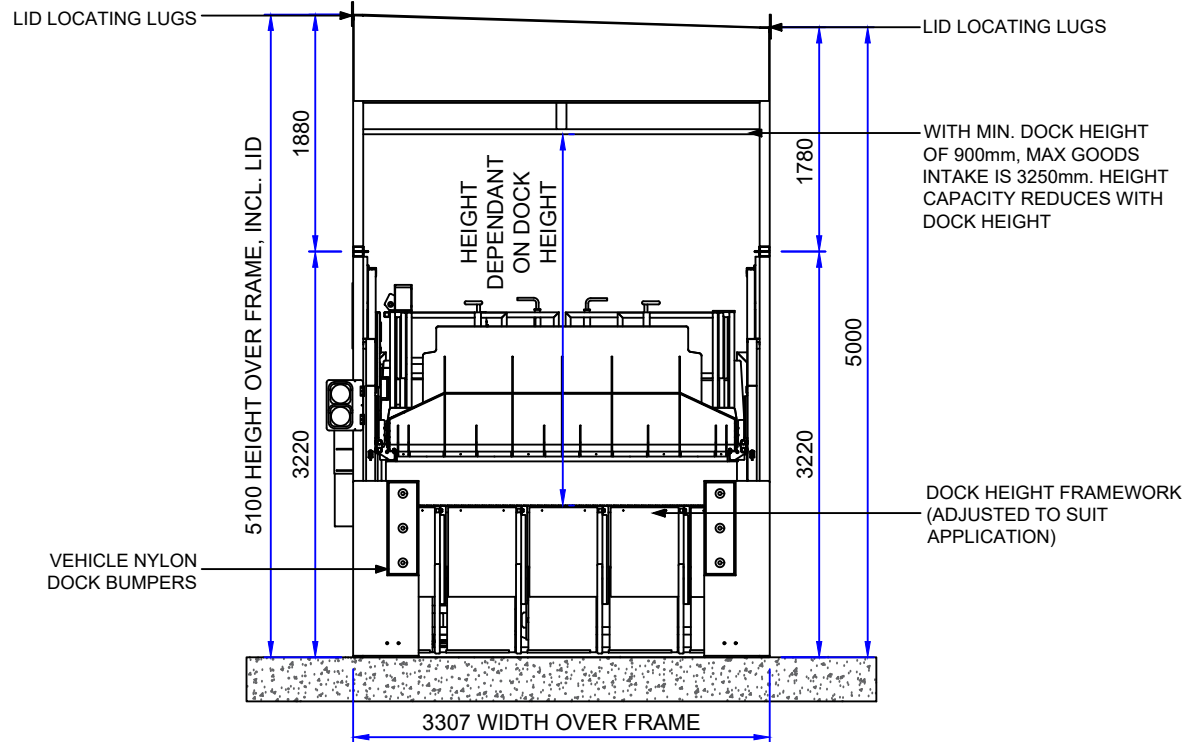
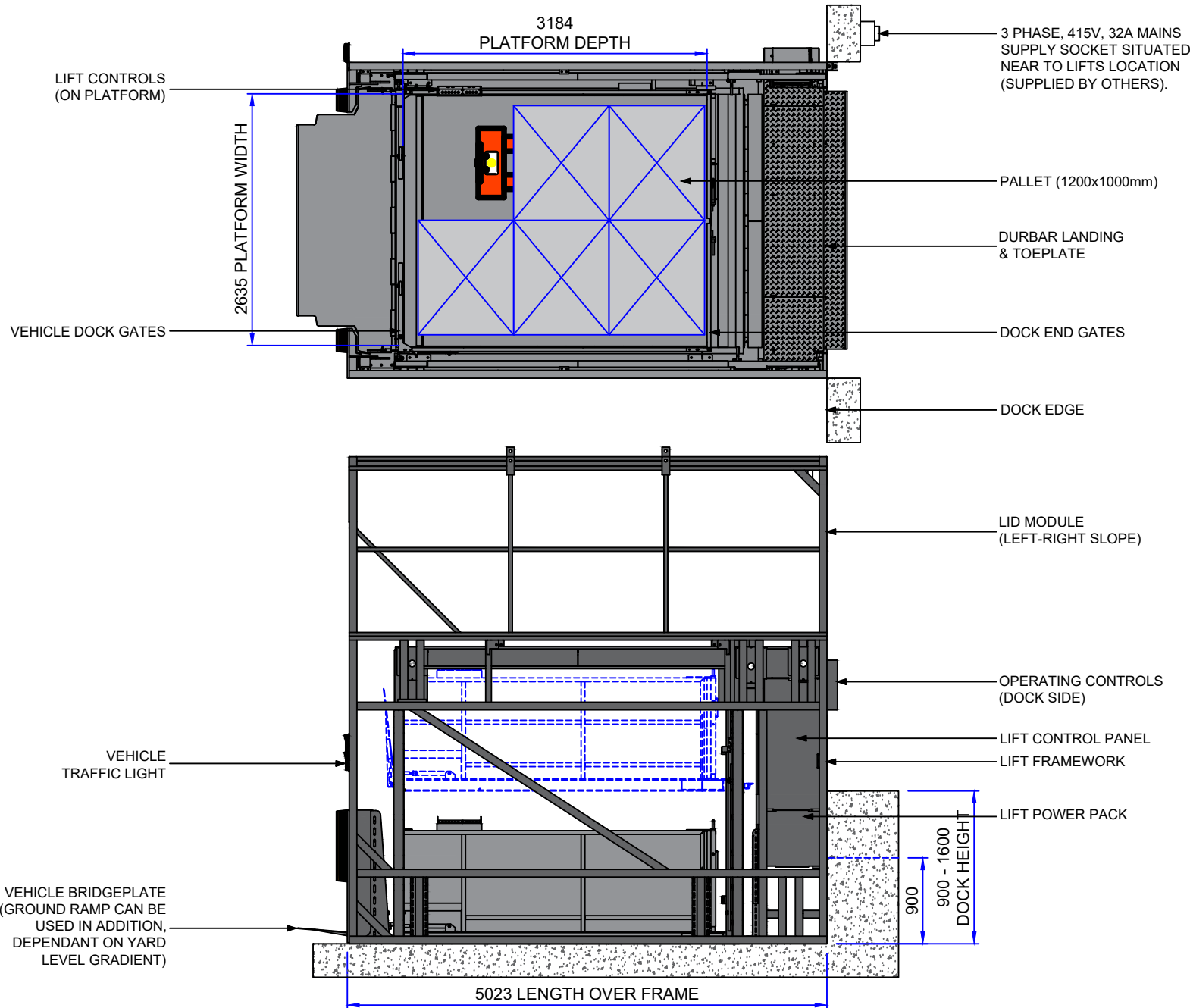
Overall Lift Dimensions: 3307mm (w) x 5023mm (l) x 5100mm (h), including standard lid type.
Width and Height subject to cladding variations and lid module variations.

Platform Dimensions Loading Area: 2635mm (w) x 3184mm (l)

Lift Colours: All Framework - BS 00A05, Goose Grey.

Options:

- Cladding - Single skin for external models.
- Travelling Operator - 1 set platform control gates (at each end).
- 1 pair of Straight Wheel Guides
- Option for Vehicle Bridgeplate with Vehicle Side Gates and Ground Ramp. Subject to site survey and project requirements.



REV No.	REV CODE	REVISION NOTE	DATE	CHANGE BY
07				
06				
05				
04				
03				
02				

HÖRMANN transDEK
...modular loading solutions

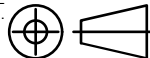
TRANSDEK UK LTD.
BRYANS CLOSE, HARWORTH, DONCASTER, DN11 8RY
TEL: 01302 752276, FAX: 01302 752434, EMAIL: info@transdek.com

THIS DRAWING IS THE PROPERTY OF TRANSDEK UK LTD AND IS CONFIDENTIAL. IT IS ISSUED SUBJECT TO THE CONDITIONS THAT:

1. THE INFORMATION OR ANY PART THEREOF CONTAINED IN IT SHALL NOT BE DISCLOSED IN ANY FORM TO A THIRD PARTY.
2. IT OR ANY PART OF IT SHALL NOT BE REPRODUCED IN ANY FORM.

GENERAL NOTES

1. WELDING SYMBOLS STANDARD TO ISO 2553 METHOD B.
2. REMOVE ALL BURRS AND SHARP EDGES.
3. ALL DIMENSIONS IN MILLIMETRES UNLESS OTHERWISE STATED.
4. THIRD ANGLE PROJECTION.



MATERIAL:		-		PROJECT:		VEHICLE DOCK LIFT (VDL) SERIES		A3		BORDER VERSION:		v4							
FINISH:		-		DRAWN BY :		SW		TITLE:					4T VDL - 6 PALLET		SPECIFICATION/TECHNICAL DATA SHEET				
WELDING SPEC: BS EN 1011-1:1998 & BS EN 1011-2:2001				DATE :		29/06/22													
<u>TOLERANCES UNLESS OTHERWISE STATED</u>				SCALE :		1:60													
MACHINING: ± 0.5				ANGULAR: ± 0.5°				ESTIMATED WEIGHT:		-		DRG. No.		9100-043128-00		REVISION:		01	
<u>FABRICATION & STRUCTURAL</u>																			
UP TO 300: ± 1				1001 UP TO 2000: ± 3															
301 TO 1000: ± 2				OVER 2000: ± 5				SHEET :		1 OF 1									